

# MONTHLY MEMBERSHIP PROGRESS REPORT

LOCATION ARIZONA

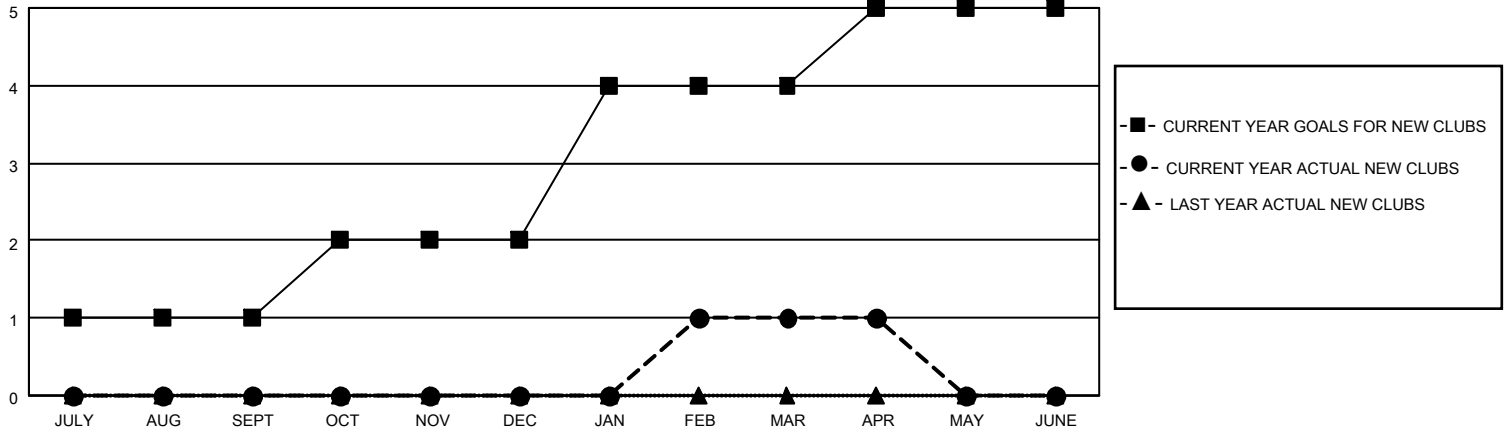
District 21 S

Results as of: 4/30/2021

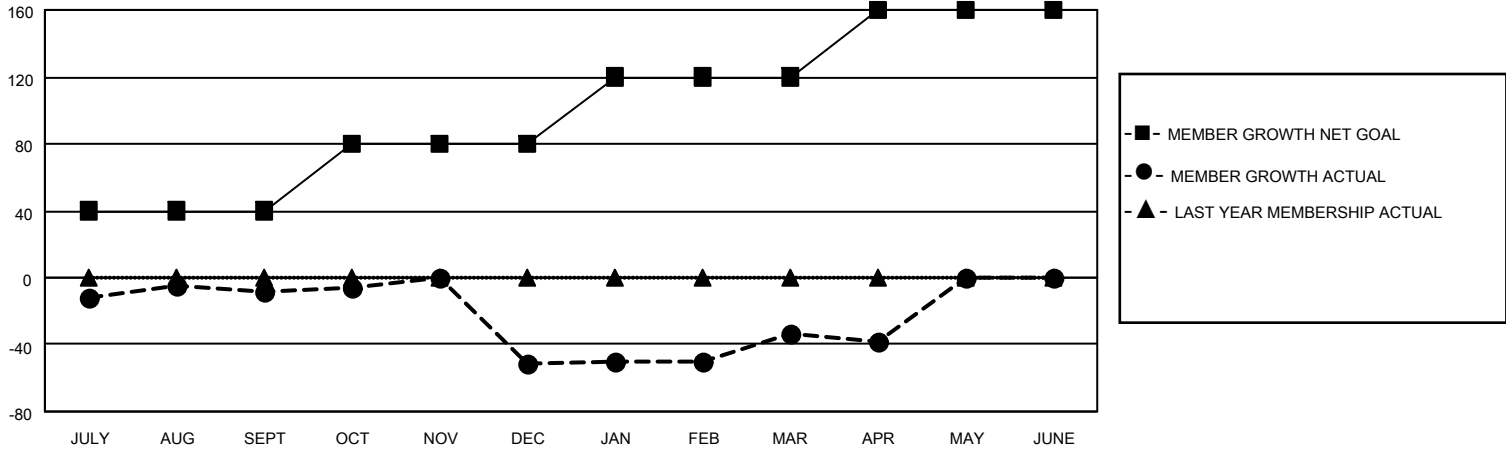
Clubs			
RESULTS FOR 2020-2021			
QUARTER	NEW CLUB GOAL	NEW CLUBS	DROPPED CLUBS
JULY/AUG/SEPT	1	0	0
OCT/NOV/DEC	1	0	0
JAN/FEB/MAR	2	1	0
APR/MAY/JUNE	1	0	0

Members			
RESULTS FOR 2020-2021			
QUARTER	MEMBER GROWTH NET GOAL	MEMBER GROWTH ACTUAL	DROPPED MEMBERS ACTUAL (including transfers)
JULY/AUG/SEPT	40	65	56
OCT/NOV/DEC	40	39	77
JAN/FEB/MAR	40	97	68
APR/MAY/JUNE	40	7	12

**GOALS AND ACTUAL NEW CLUBS CUMULATIVE**



**GOALS AND ACTUAL MEMBERS CUMULATIVE**



DROPPED CLUBS: 0	25 CLUBS OF 51 ADDED 1 OR MORE NEW MEMBERS	<u>GENDER DISTRIBUTION</u>
<u>DROPPED MEMBERS</u>	<a href="#">CLICK HERE FOR CUMULATIVE MEMBERSHIP DATA</a>	MALE            648 (54.45%)
DECEASED            24		FEMALE         542 (45.55%)
CLUB CANCELLED       0		TOTAL FAMILY UNIT MEMBERS            297
OTHER                 189		FAMILY MEMBERS PAYING HALF DUES            151
<b>TOTAL                 213</b>		